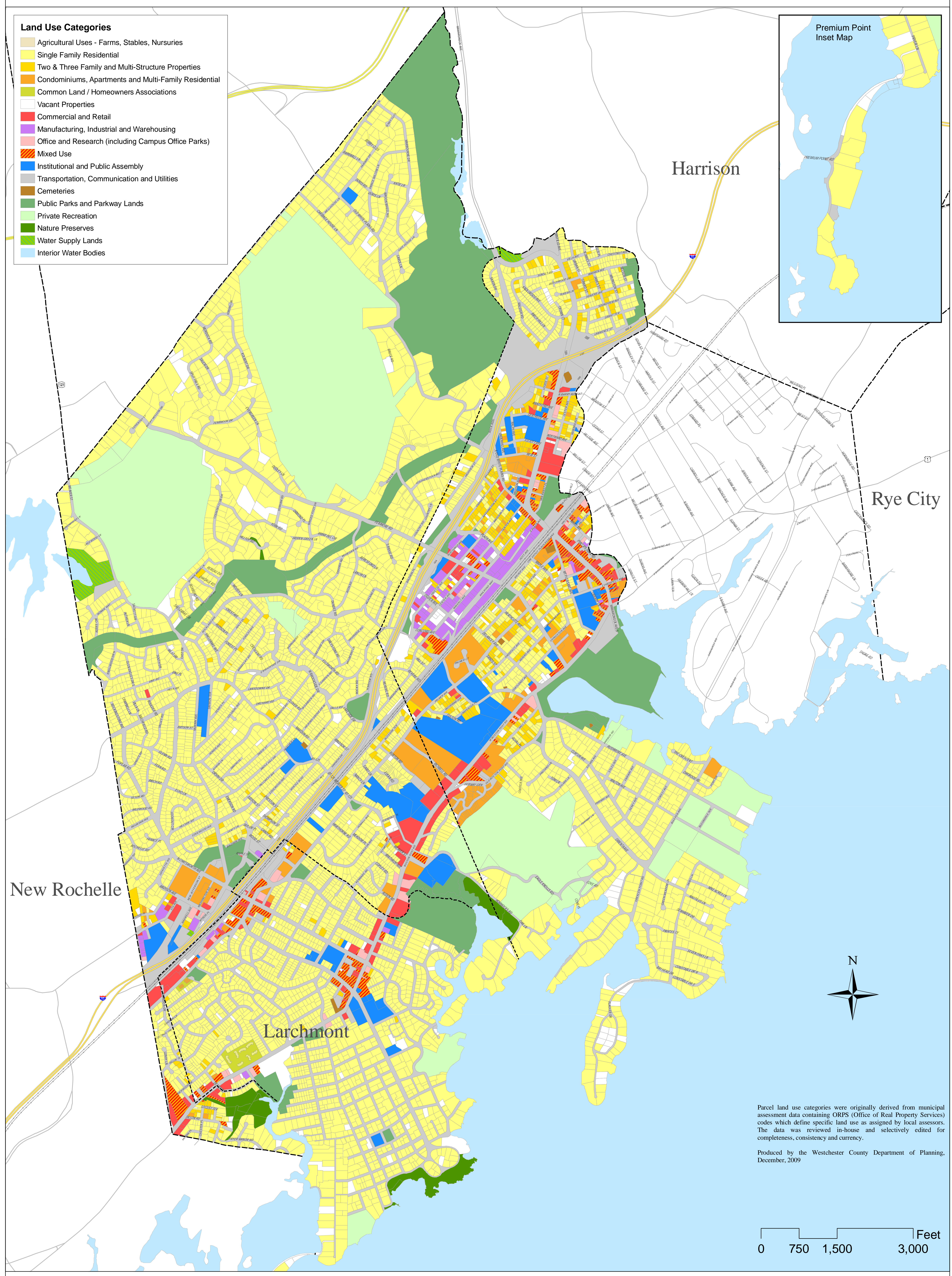
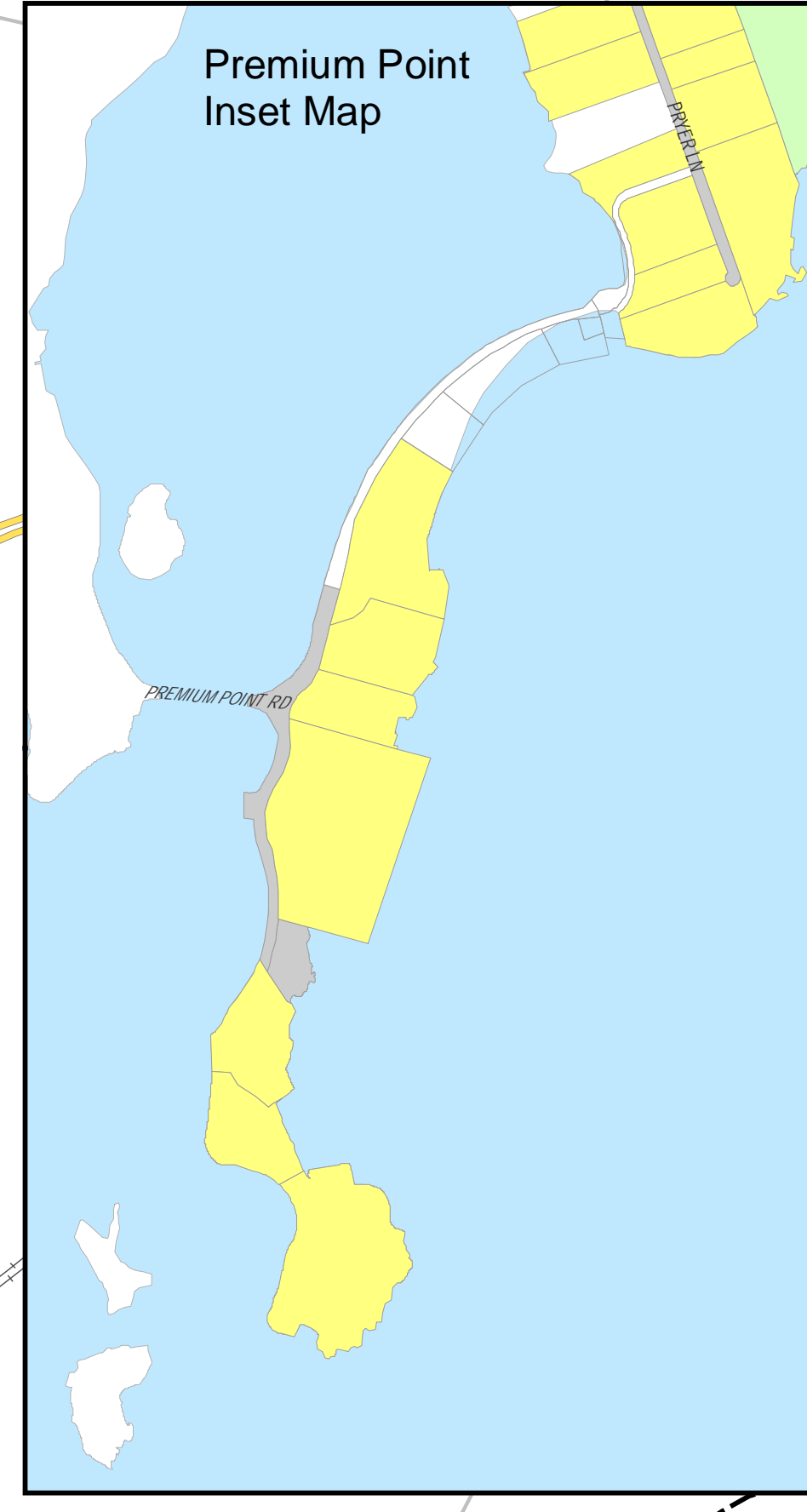


# TOWN OF MAMARONECK, NEW YORK

- Land Use Categories**
- Agricultural Uses - Farms, Stables, Nurseries
  - Single Family Residential
  - Two & Three Family and Multi-Structure Properties
  - Condominiums, Apartments and Multi-Family Residential
  - Common Land / Homeowners Associations
  - Vacant Properties
  - Commercial and Retail
  - Manufacturing, Industrial and Warehousing
  - Office and Research (including Campus Office Parks)
  - Mixed Use
  - Institutional and Public Assembly
  - Transportation, Communication and Utilities
  - Cemeteries
  - Public Parks and Parkway Lands
  - Private Recreation
  - Nature Preserves
  - Water Supply Lands
  - Interior Water Bodies

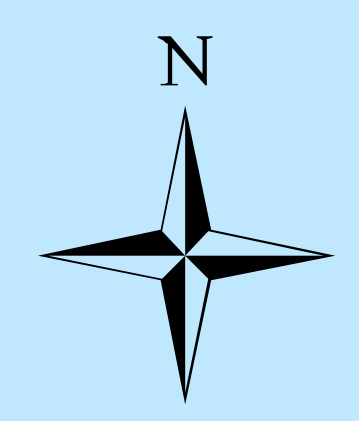


New Rochelle

Harrison

Rye City

Larchmont



Parcel land use categories were originally derived from municipal assessment data containing ORPS (Office of Real Property Services) codes which define specific land use as assigned by local assessors. The data was reviewed in-house and selectively edited for completeness, consistency and currency.

Produced by the Westchester County Department of Planning, December, 2009

